



# Responding to the COVID-19 Pandemic with Equity Strategies



To ensure health for all in Alameda County, we must keep health & social equity at the center of our response and recovery.



[COVID-19 Data for Alameda County](#)  
as of 5/8/20

Total Confirmed Cases

**1,957**

Total Deaths

**70**

**We must protect health of all, but especially those most marginalized and vulnerable to COVID-19.**

Older adults, people with pre-existing health conditions, people experiencing homelessness, people in congregate living settings (including long-term care facilities, jail/prison, shelters), people/workers/communities of color, immigrants

**Some factors that can increase vulnerability include:**

Health risks due to co-morbid conditions



Socio-economic risks that limit ability to protect health



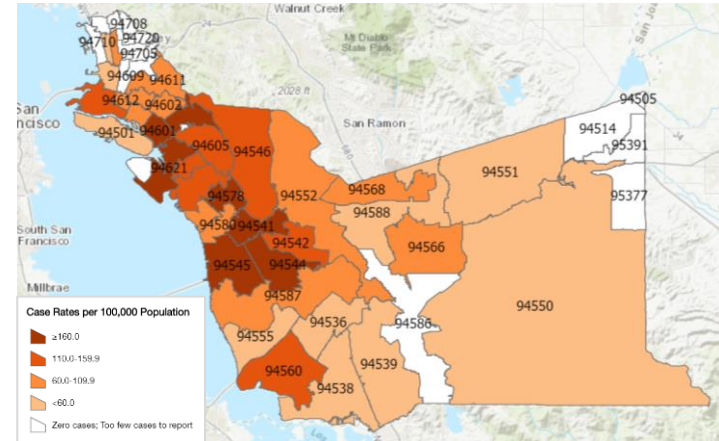
Environmental risks due to crowded conditions



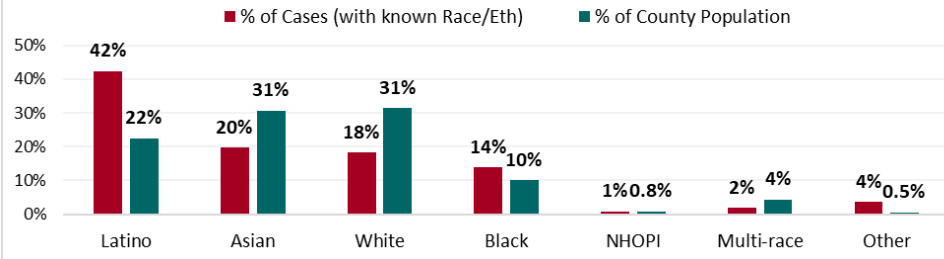
Structural inequities that increase risk of these risks



**COVID-19 Case Rates (per 100,000 pop) by Zip Code in Alameda County**  
data as of 5/4/20



**Share of COVID-19 Cases vs. Share of Population in Alameda County**  
data as of 5/3/20



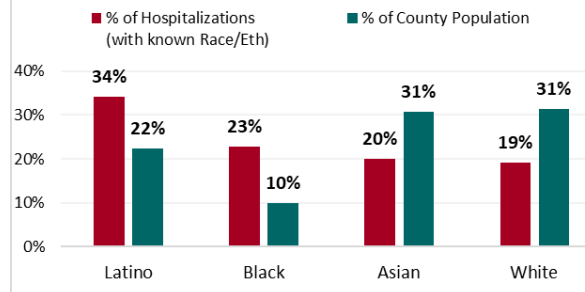
Reflecting long-standing racism, **communities of color are being disproportionately impacted by COVID-19** across the country and county.

**The highest case rates of COVID-19 are reported in zip codes in East Oakland and unincorporated central County** – including parts of Ashland, Cherryland, Fairview, and Hayward.

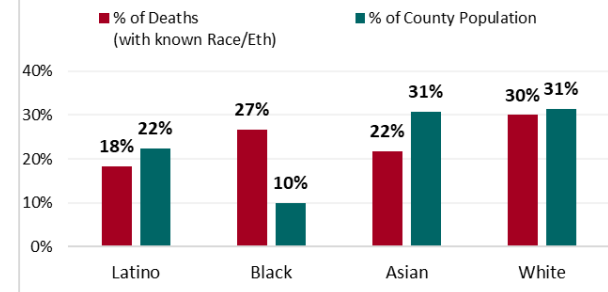
In Alameda County, **Latinos and African Americans disproportionately account for COVID-19 cases and hospitalizations.**

**African Americans are disproportionately represented among COVID-19 deaths.**

**Share of COVID-19 Hospitalizations vs. Share of Population in Alameda County**  
data as of 5/3/20



**Share of COVID-19 Deaths vs. Share of Population in Alameda County**  
data as of 5/3/20



Public health measures are critical to control the spread of COVID-19 and continue “flattening the curve” in Alameda County, including:



Testing



Isolation of Sick



Contact Tracing



Quarantine of Exposed



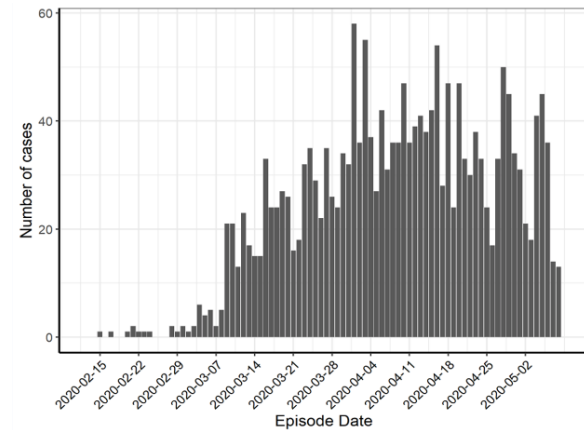
Physical Distancing



Hygiene

We must work to ensure that all community members – and especially those most marginalized/vulnerable – can adopt protective measures.

Epi Curve of COVID-19 Cases in Alameda County



### INDIVIDUAL & COMMUNITY HEALTH IMPACTS OF COVID-19



#### PHYSICAL

- **Morbidity**  
COVID-19 cases, hospitalizations
- **Mortality**  
COVID-19 deaths
- **Indirect Health Impacts**  
Other patients who cannot access needed care



#### PSYCHO-SOCIAL

- **Social Isolation**  
Decline in family, social, community connections
- **Stress**
- **Mental Health**  
Depression, anxiety, trauma
- **Substance Use**
- **Violence**  
Family violence, Community violence



#### SOCIO-ECONOMIC

- **Loss of Wages & Work**
- **Unemployment**
- **Small Business Strain**
- **Education**  
School closures, School meal barriers
- **Housing**  
Cost burden, instability, homelessness
- **Basic Living Needs**  
Food, utilities, transportation, healthcare, medicine



#### INSTITUTIONAL/STRUCTURAL

- **Health System Burden**
- **Social Safety Net Strain**
- **Racism & Xenophobia**  
Anti-Chinese/Asian racism  
Institutional/structural racism  
Anti-immigrant bias
- **Health & Social Inequities**  
High risks/cumulative impacts for low-income, people of color, immigrants, homeless, incarcerated

COVID-19 is broadly and deeply affecting individual and community health at multiple levels.

Multi- and cross-sector action – in partnership with impacted communities – is critical to provide immediate resources/supports and longer-term policy/systemic changes.

To support health/racial equity and groups/communities hardest hit by COVID-19, key institutional and community priorities for action include:



Expanded & Targeted Testing



Data Surveillance



Isolation/Quarantine Supports & Protective Measures for High-Risk



Targeted Resources, Messaging, & Supports for Marginalized/Impacted



Emergency Economic Assistance & Social Benefits



Moratorium on Evictions, Foreclosures, & Utility Shutoffs



Protective Measures for People Experiencing Homelessness



Protective Measures for People who are Incarcerated



Healthcare, Emergency Assistance, & Sanctuary for Immigrants