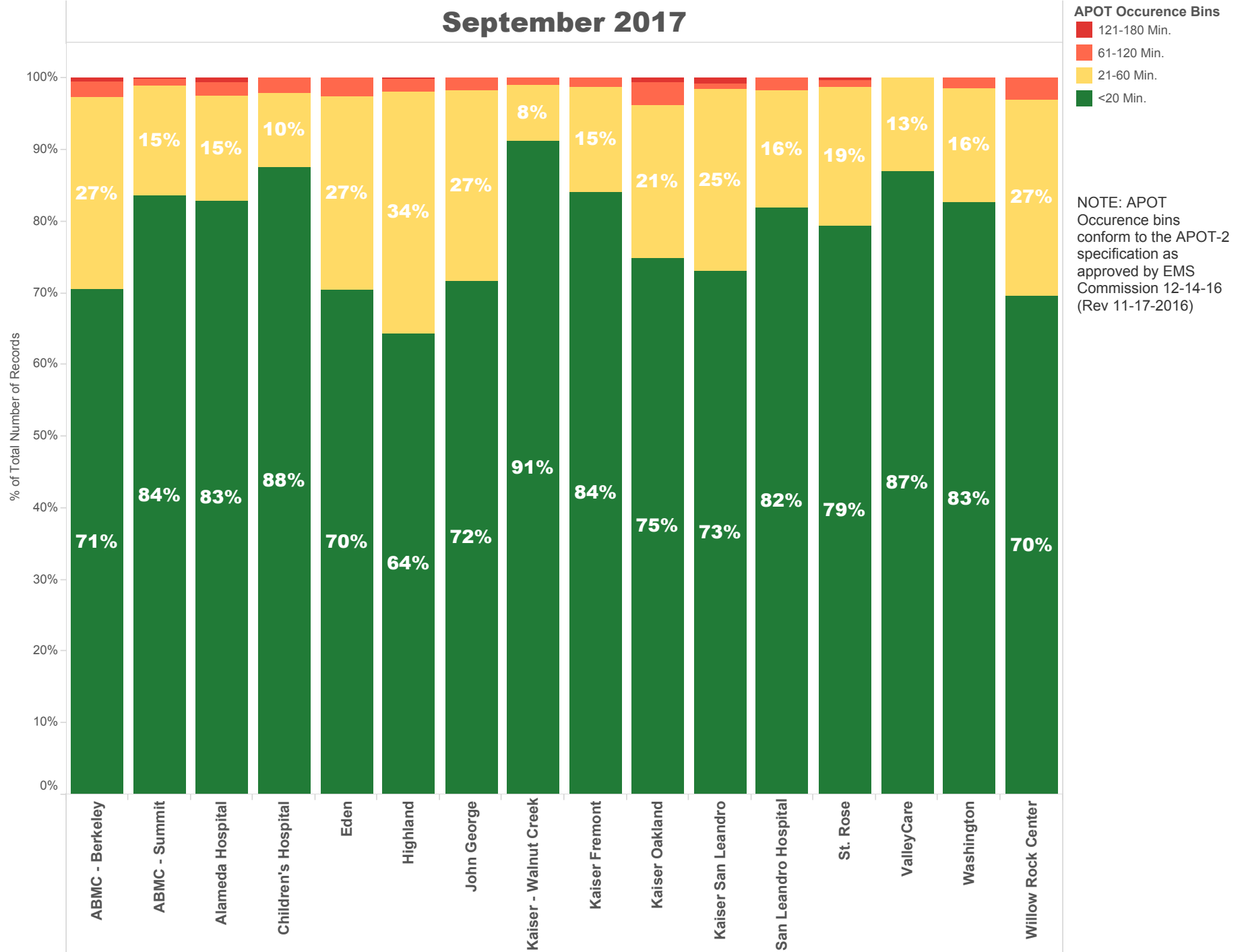


September 2017

NOTE: The **90th percentile** is the value for which 90% of the data points are smaller.

Destination Facility	Rank (Composite)	Avg. TOC	90th Percentile TOC	APOD >60 min	APOD % of N	N = Number of Transports
Kaiser - Walnut Creek	1	12 min.	19.0 min.	1	1%	114
ABMC - Berkeley	12	18 min.	35.8 min.	15	3%	573
John George	9	17 min.	32.0 min.	6	2%	360
Alameda Hospital	6	15 min.	26.7 min.	4	2%	164
Children's Hospital	7	13 min.	27.6 min.	3	2%	153
San Leandro Hospital	10	15 min.	31.0 min.	11	2%	595
Washington	5	15 min.	28.5 min.	11	1%	786
Kaiser Fremont	3	14 min.	27.0 min.	6	1%	430
ABMC - Summit	2	14 min.	26.8 min.	13	1%	1,013
ValleyCare	1	13 min.	25.0 min.	0	0%	498
Kaiser Oakland	14	18 min.	40.0 min.	23	4%	577
Kaiser San Leandro	8	18 min.	30.3 min.	11	2%	648
Eden	13	19 min.	41.0 min.	22	3%	835
Highland	11	20 min.	40.0 min.	23	2%	1,017
St. Rose	4	16 min.	29.8 min.	5	1%	387
Willow Rock Center	15	20 min.	42.0 min.	1	3%	33

September 2017



September 2017

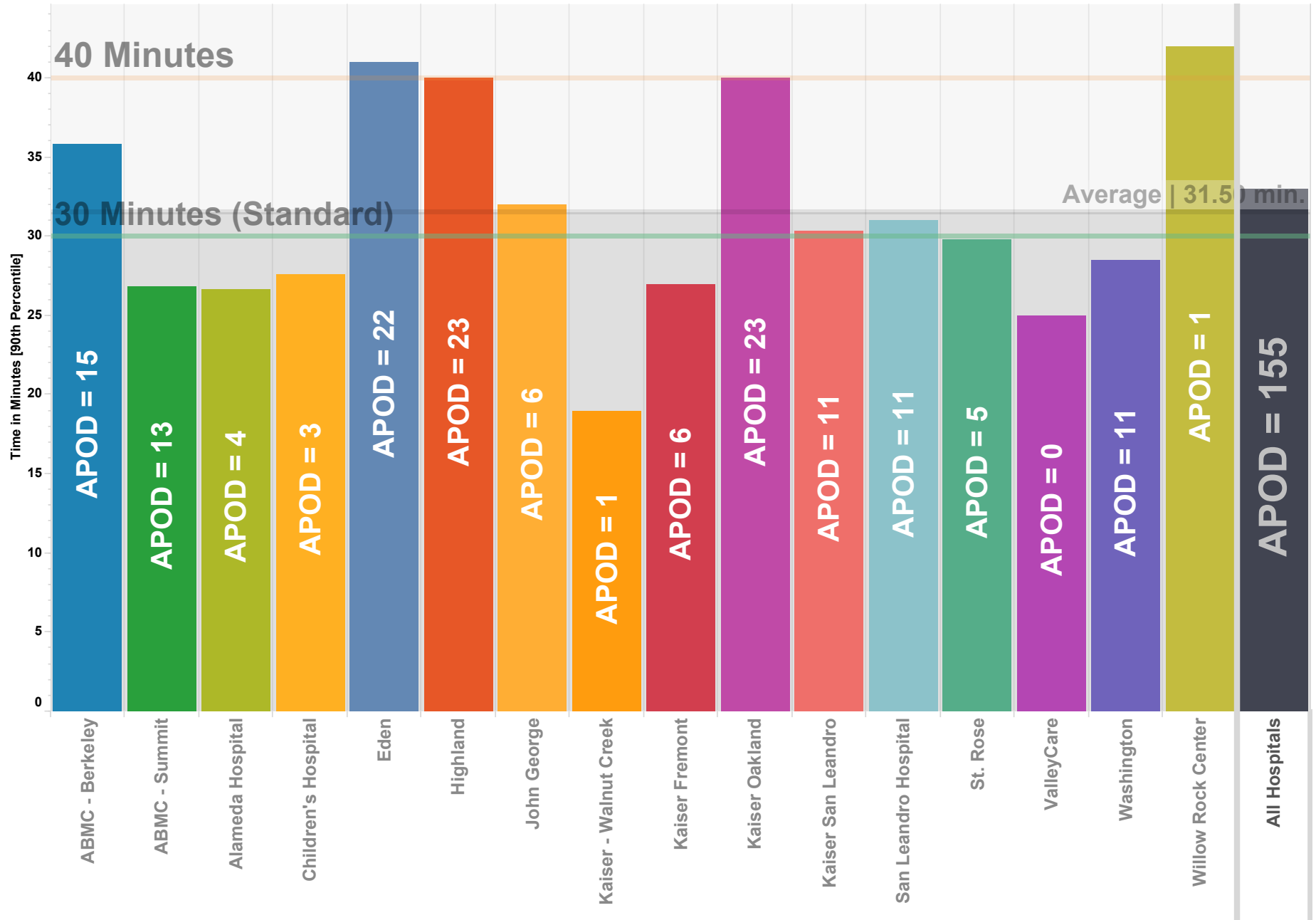
	ABMC - Berkeley	ABMC - Summit	Alameda Hospital	Children's Hospital	Eden	Highland	John George	Kaiser - Walnut Creek	Kaiser Fremont	Kaiser Oakland	Kaiser San Leandro	San Leandro Hospital	St. Rose	ValleyCare	Washington	Willow Rock Center
APOT Occurrence Bins																
121-180 Min.	0.3%	0.1%	0.6%			0.1%				0.5%	0.8%		0.3%			
61-120 Min.	2.3%	1.0%	1.8%	2.0%	2.5%	1.8%	1.7%	0.9%	1.2%	3.3%	0.8%	1.7%	1.0%		1.4%	3.0%
21-60 Min.	26.9%	15.2%	14.6%	10.5%	27.1%	33.8%	26.7%	7.9%	14.7%	21.3%	25.3%	16.5%	19.4%	13.1%	15.9%	27.3%
<20 Min.	70.5%	83.7%	82.9%	87.6%	70.4%	64.3%	71.7%	91.2%	84.2%	74.9%	73.1%	81.8%	79.3%	86.9%	82.7%	69.7%

NOTE: APOT Occurrence bins conform to the APOT-2 specification as approved by EMS Commission 12-14-16 (Rev 11-17-2016)

Ambulance Patient Offload Times (APOT) September 2017

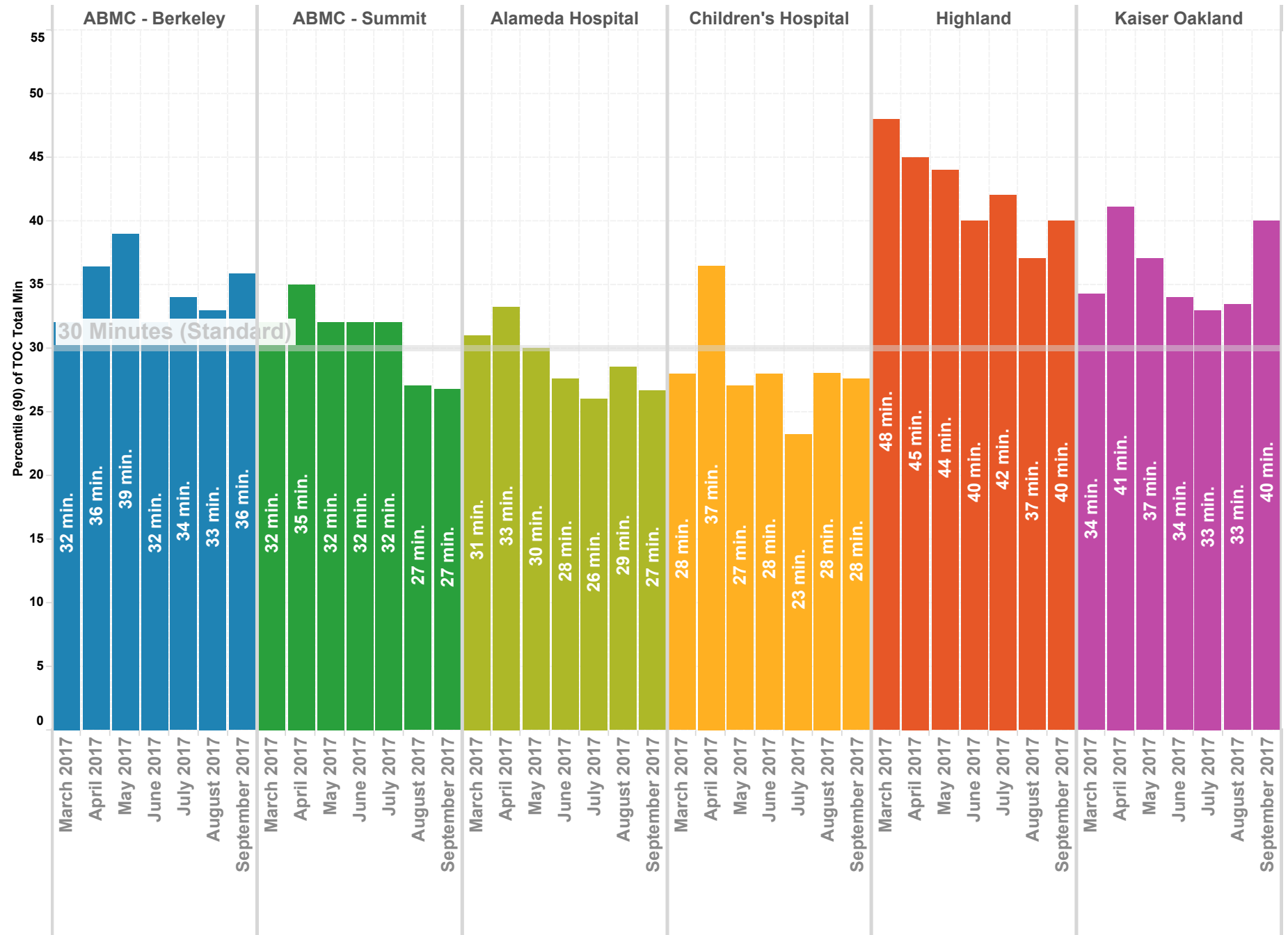
90th Percentile

NOTE: The **90th percentile** is the value for which 90% of the data points are smaller.



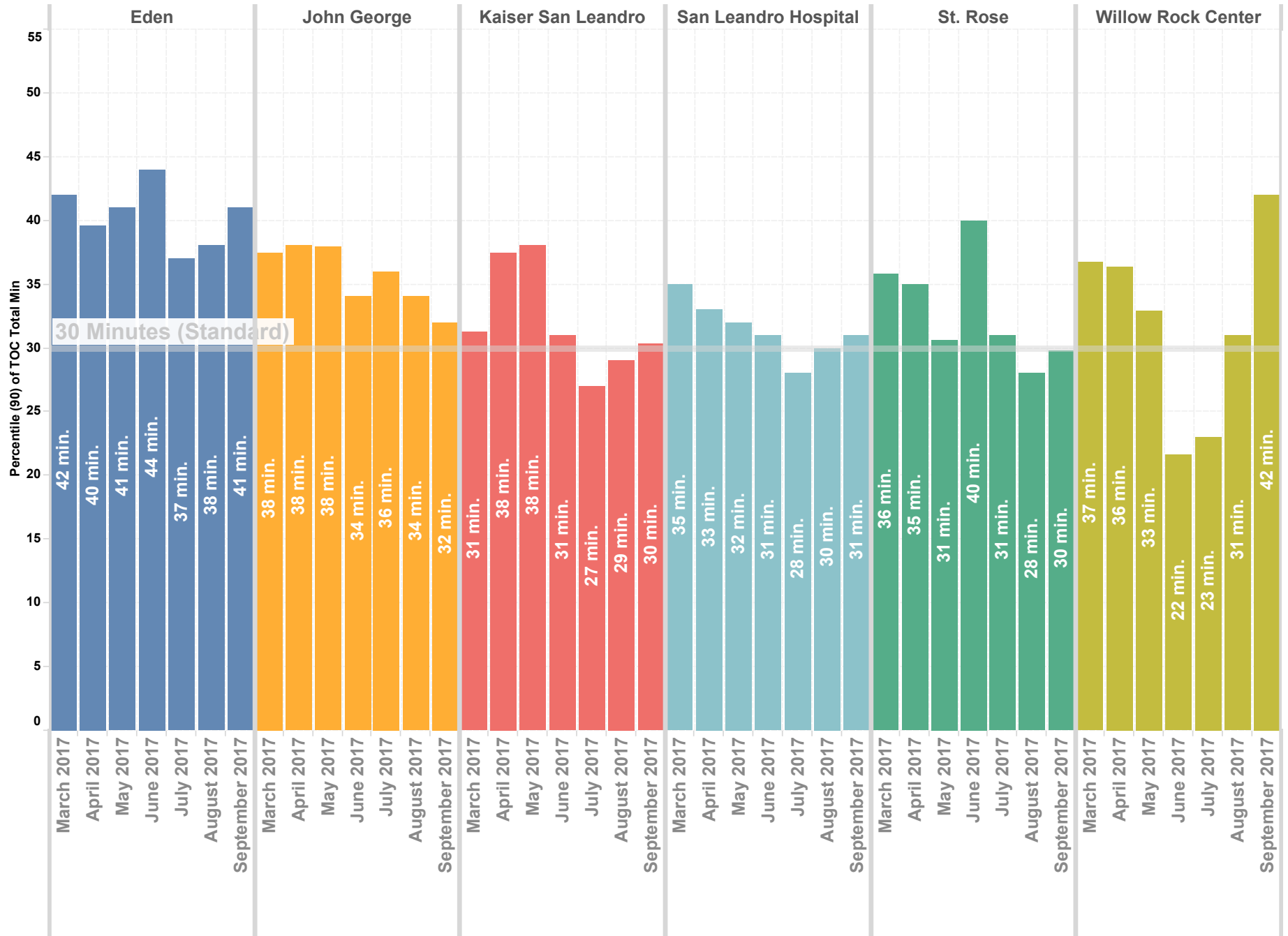
Wall Times (TOC) 2016 By Month - North County

Previous 8 Months | 90th Percentile



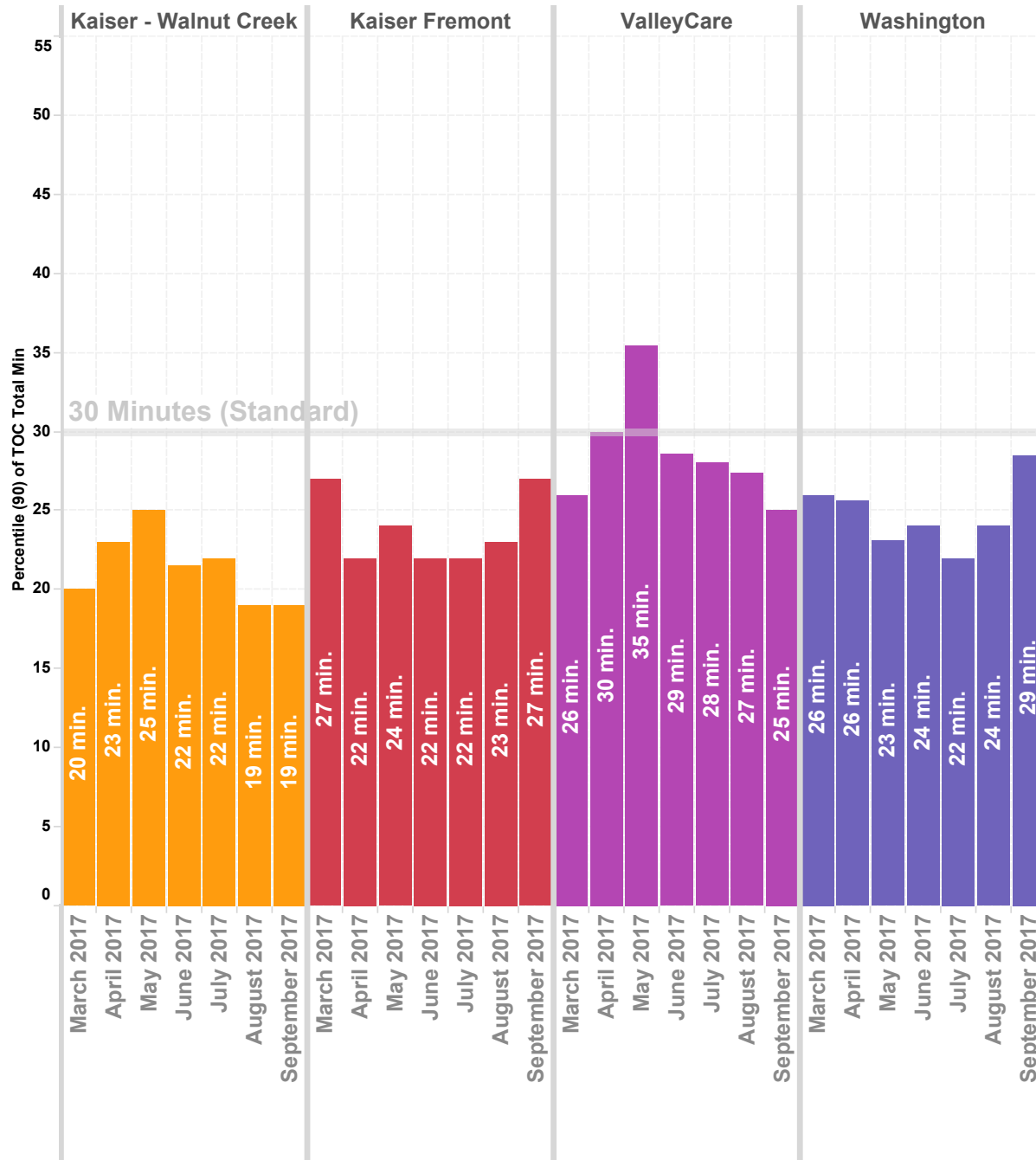
Wall Times (TOC) 2016 By Month - Mid County

Previous 8 Months | 90th Percentile



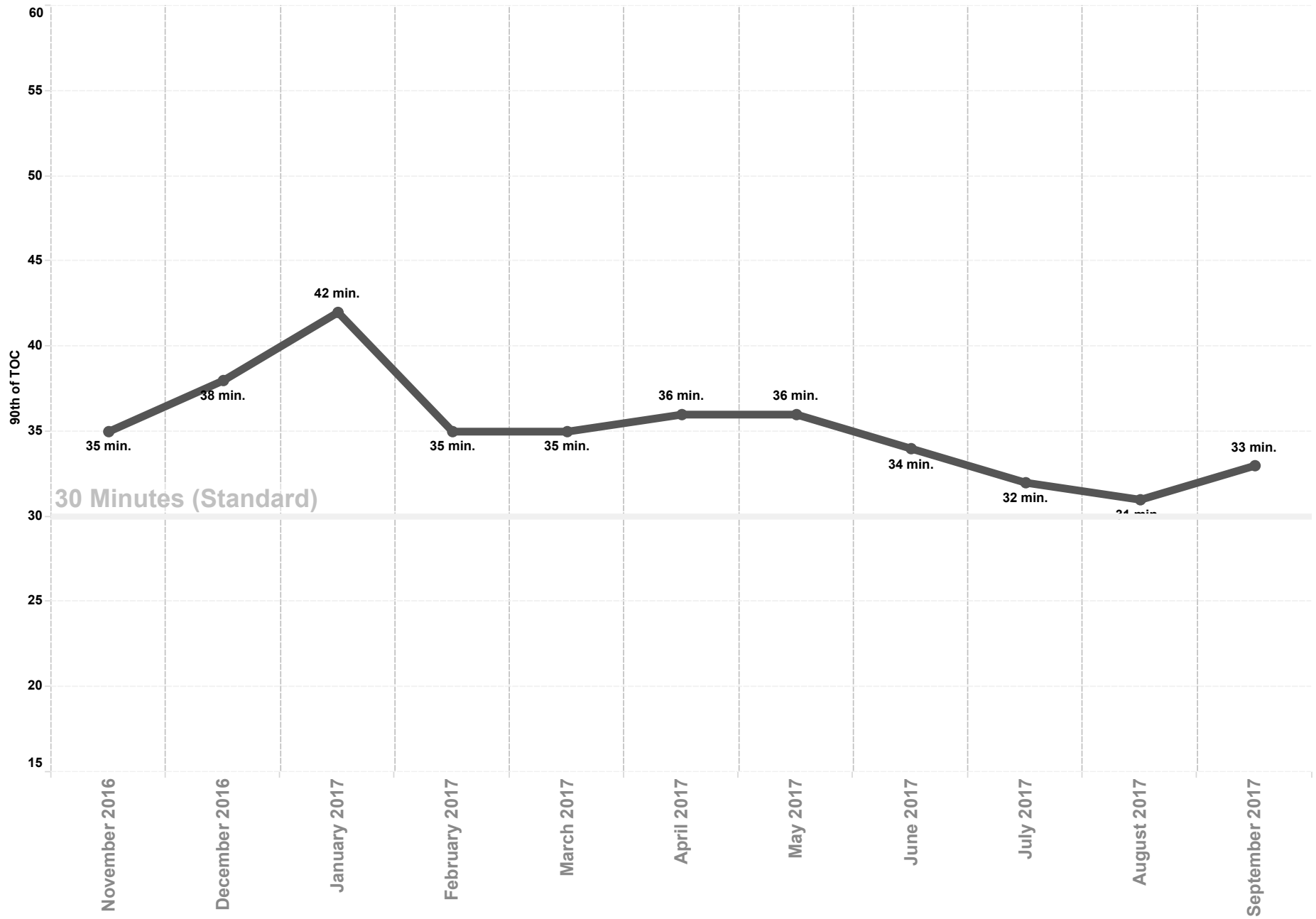
Wall Times (TOC) 2016 By Month - East County & South County

Previous 8 Months | 90th Percentile



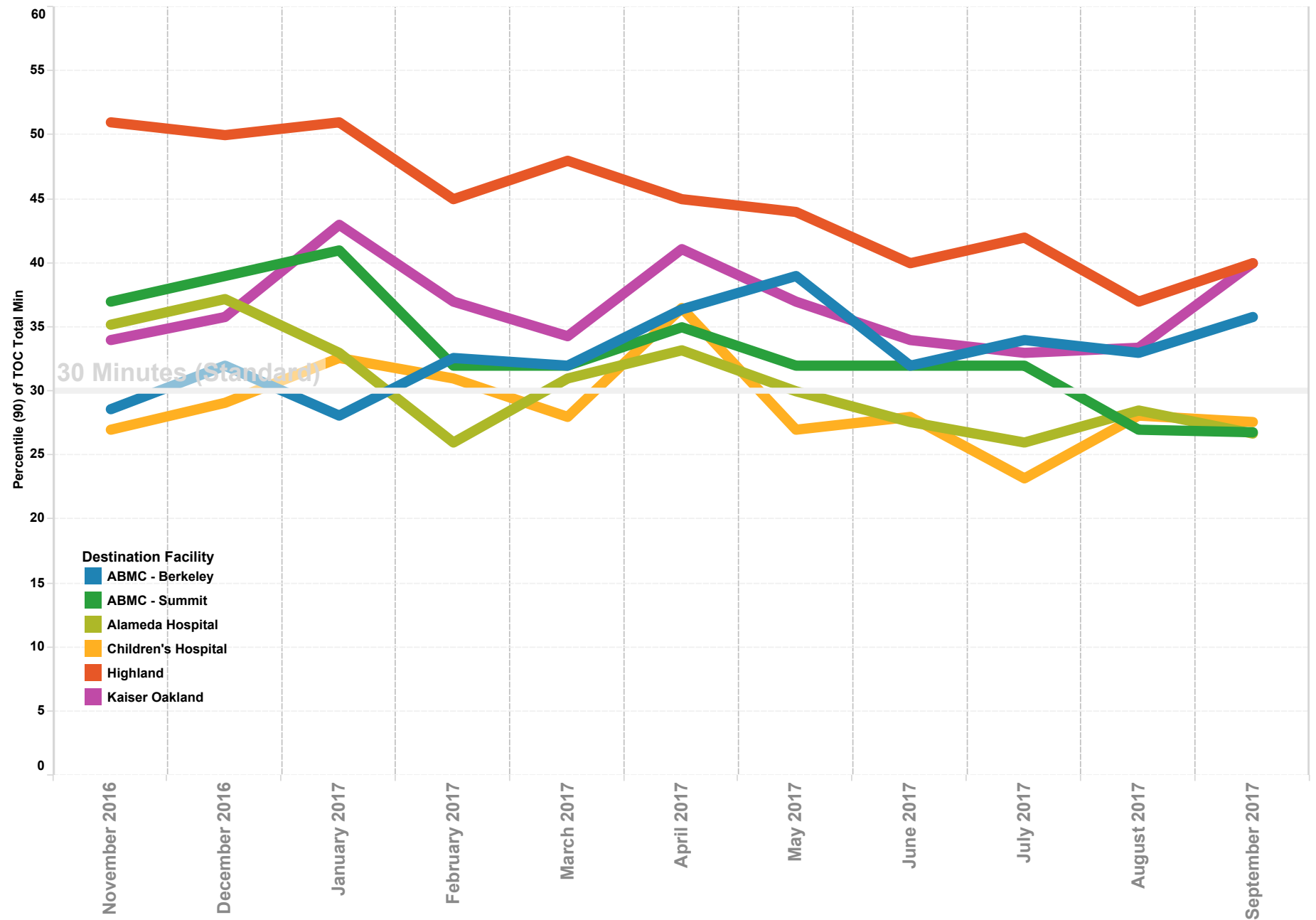
APOT All Hospitals

Previous 12 Months | 90th Percentile



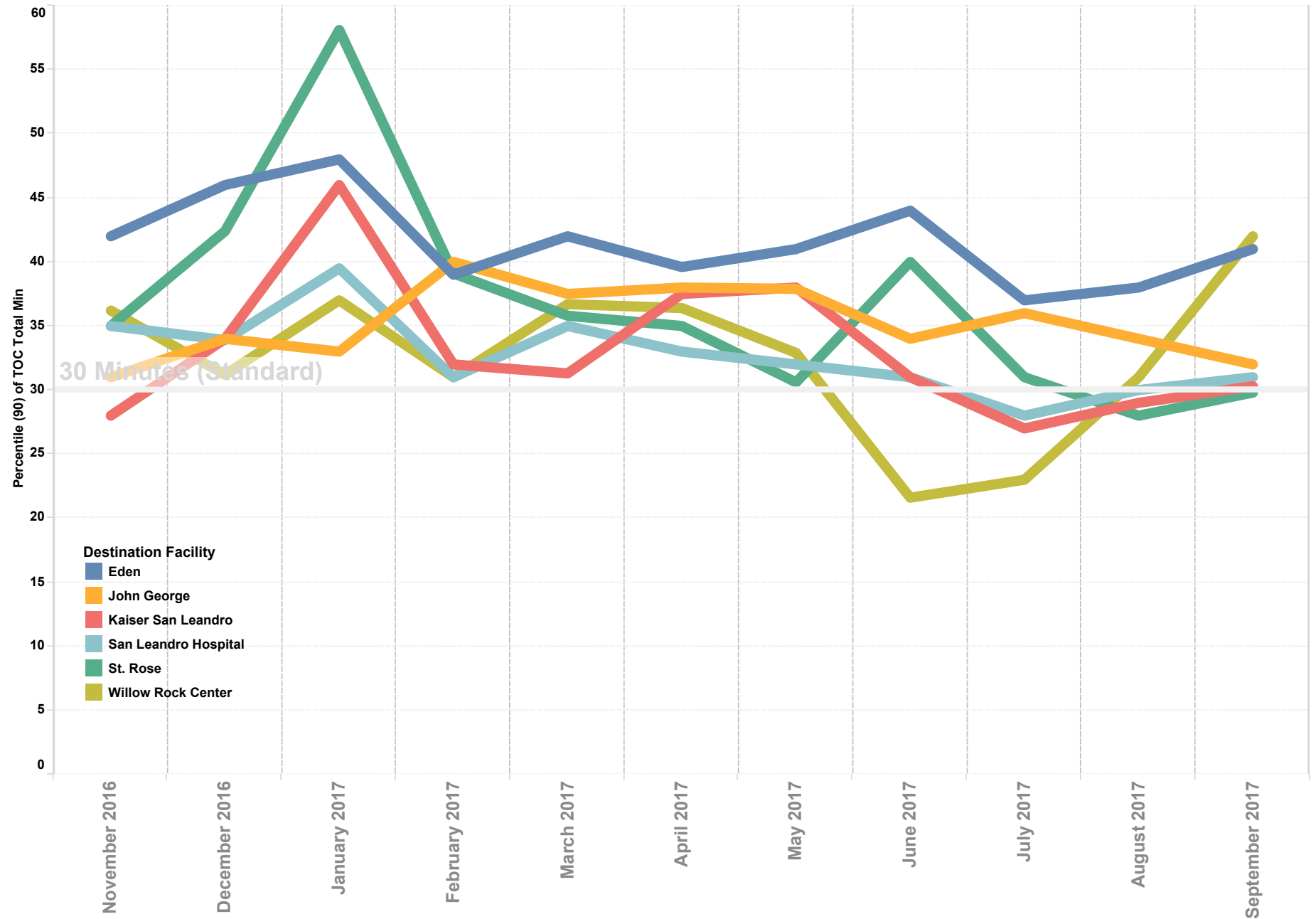
APOT North County

Previous 12 Months | 90th Percentile



APOT Mid County

Previous 12 Months | 90th Percentile



APOT South and East County

Previous 12 Months | 90th Percentile

